



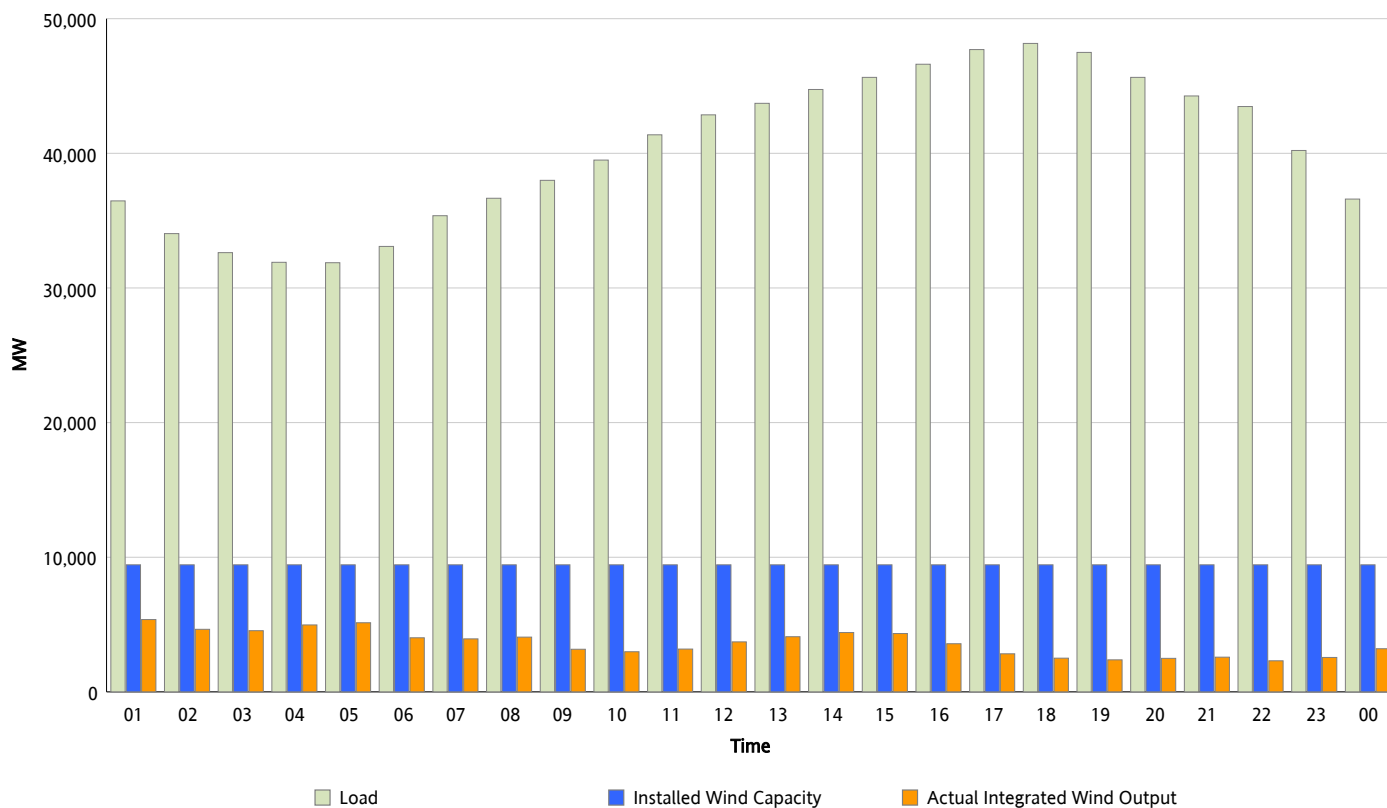
ERCOT Grid Operations

Wind Integration Report : 05/31/2012

Peak Load	48,162 MW
Load Peak Hour (HE)	18
Wind Over Peak	2,504 MW
Wind Record 04/13/12	7,925 MW
Max Wind Value*	5,856 MW
Wind Peak Time	00:09
Wind Integration %	15.58 %

Hourly Average Actual Load vs. Actual Wind Output

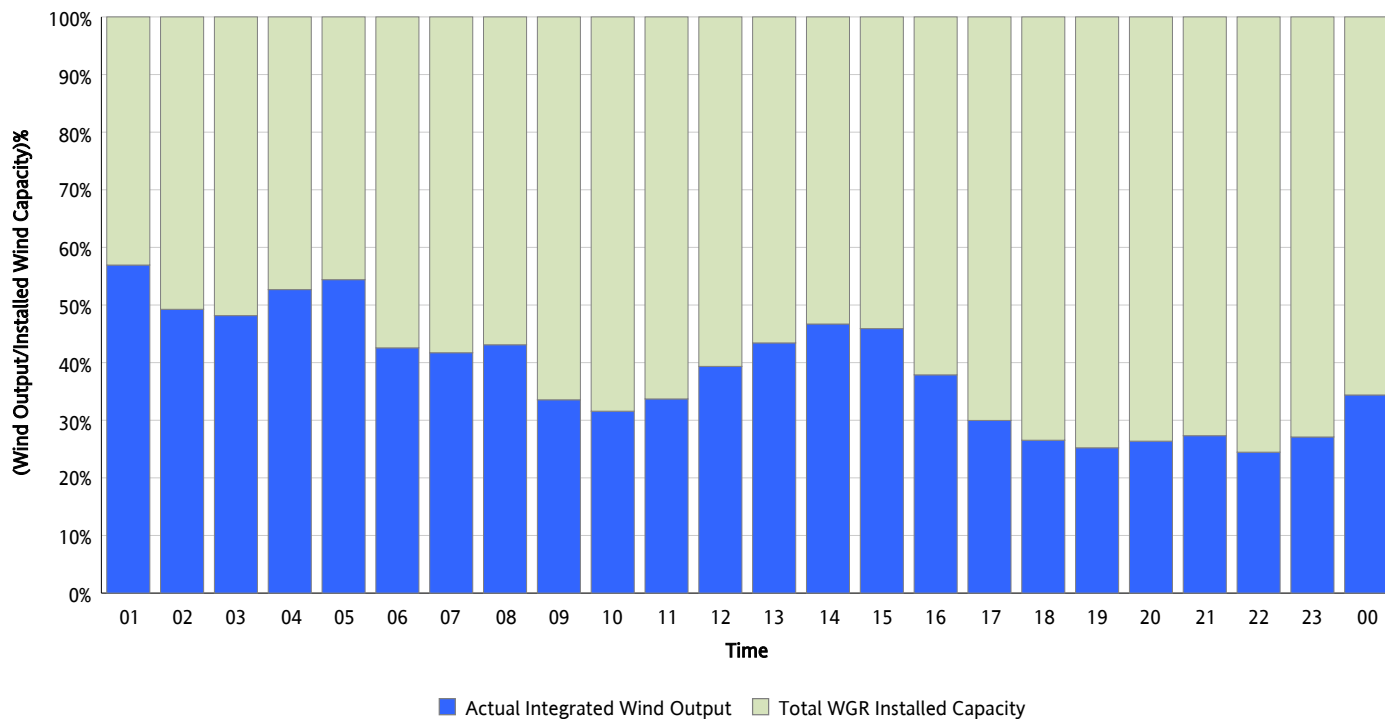
05/31/2012



* Wind Record and Wind Max represent instantaneous values and the rest of the values are integrated over the hour

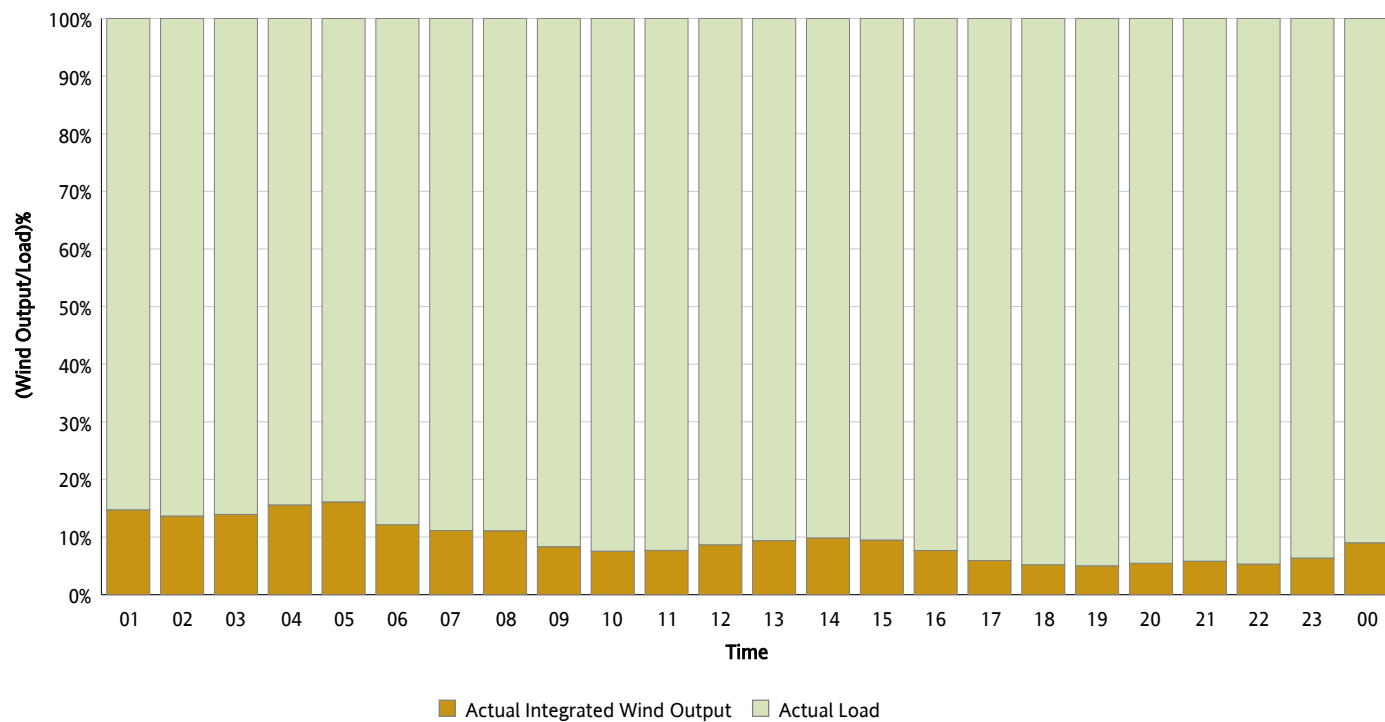
Actual Wind Output as a Percentage of the Total Installed Wind Capacity

05/31/2012



Actual Wind Output as a Percentage of the ERCOT Load

05/31/2012



ERCOT Load vs. Actual Wind Output

05/24/2012 - 05/31/2012

